



An ISO 9001:2008 certified company



LINER SERIES & BORE LIST



Committed to the best performance



We don't compromise with quality



Srimanta Overseas Pvt. Ltd., an ISO 9001:2008 certified company, is a leading manufacturer and exporter of Wet & Dry Type Cylinder Liners, Sleeves and Air Cooled Blocks for the last 3 decades. Srimanta is producing a million pieces per annum.

The company is based at Rajkot-Gujarat, a hub of auto components manufacturing in India.

Srimanta Liners are well accepted by the customers across the globe and our Liners are exported to more than 20 countries including USA & UK.

We, at Srimanta, are committed to provide total customer satisfaction by consistently supplying high quality Cylinder Liners at the most competitive prices, through continuous evolution and innovation.

The low cost and quality manufacturing has speeded up our growth. Our focus is on total customer satisfaction. To cover maximum market share globally for our products through leveraging costs, improved quality and strategic ways of action, is our vision.



Global Customer Support

We appreciate the fact that we are fortunate to have support and co-operation from the customers at every stage in our journey towards success. We are committed to fulfill their aspirations and remain worthy to their faith. We offer relentless support and fullest co-operation to the customers overseas.

To give a thrust, we invite them for informal get-to-gathers and help them along on the occasions of trade fairs and festivals.

We keep making relations with our customers stronger and cross the thresholds of new markets and novel applications, across more than 20 countries including USA and UK.

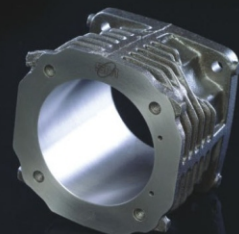




S.No.	Application (Suitable For)	Bore	S.No.	Application (Suitable For)	Bore
01	ALBION - 4.11 LITRE	104.183	50	B.M.W 2 LITRE.	66.000
02	ALBION - 4880 CC.	107.950	51	B.M.W M69,R-4	78.000
03	ALBION -5.5 LITRE	114.300	52	BEDFORD 1598 CC	80.000
04	ALBION -5.76 LITRE	100.627	53	BEDFORD 1760 CC	79.375
05	ALFA ROMEO 154A2.000	84.000	54	BEDFORD 1951 CC	86.000
06	ALFA ROMEO 8140.21	93.000	55	BEDFORD 4927 CC	98.400
07	ALFA ROMEO 8140.61 (With Collar)	93.000	56	BEDFORD 8200 CC	115.888
08	ALFA ROMEO 8140.61 (Without Collar)	93.000	57	BEDFORD 1057 CC HA	74.295
09	ALLIS CHALMERS B125	85.725	58	BEDFORD 1159 CC VAN	77.749
10	ALLIS CHALMERS D175, D262, D262/DA262	90.500	59	BEDFORD 1507 CC CA	79.378
11	ANDORIA	90.000	60	BEDFORD 1594 CC VAN	81.635
12	ARMSTRONG SID 20HP	107.000	61	BEDFORD 330 CC VAN	103.175
13	ASIA TOWNER	70.000	62	BEDFORD 3519 CC (SU2083)	85.725
14	ASIA KH	110.000	63	BEDFORD 3519 CC (SU3819F)	85.725
15	ASIA 13/15/18/23 TON	137.000	64	BEDFORD 3614 CC	103.175
16	ASIA F17 E GRANTO15/18T	139.000	65	BEDFORD [VAUXHALL] KT4062FU	103.175
17	ASIA 26 with collar	91.500	66	BEDFORD [VAUXHALL] KT4062VU	103.175
18	AUDI 1471 CC	76.500	67	BEDFORD 381 ENGINE	104.775
19	AUDI L4TD, 74KW(100PS)	76.500	68	BEDFORD 4.92 LITRE.	98.400
20	AUDI DIESEL	79.500	69	BEDFORD 466 ENGINE	115.888
21	AUSTIN 1485 CC	76.200	70	BEDFORD 500 PHASE-11	115.888
22	AUSTIN 1625 CC OHV	76.187	71	BEDFORD J/6	103.175
23	AUSTIN 1695 CC	84.442	72	BEDFORD W/C	103.175
24	AUSTIN 1798 CC	80.251	73	B.S.A. 500 CC OHV	66.000
25	AUSTIN 1098 CC	64.567	74	B.S.A. B25 STARFIRE	67.000
26	AUSTIN 1200 CC	65.470	75	B.S.A. C-15 SPARTMAN	67.000
27	AUSTIN 1489 CC	73.012	76	B.S.A. 650 CC ROCKET	69.990
28	AUSTIN 1489CCJ4M10	73.012	77	B.S.A. 348 CC OHV	71.000
29	AUSTIN 1700 CC OHV	80.251	78	B.S.A. M21/ M20	82.000
30	AUSTIN 2178CCTAXICA	82.550	79	B.S.A. 499 CC B34	84.938
31	AUSTIN 2199CC OHV	79.352	80	B.S.A. M 33 OHV	85.000
32	AUSTIN 2520CC OHV	84.938	81	B.S.A. 1489 CC1 1/2 LI	73.012
33	AUSTIN 2520CC OHV	88.900	82	B.S.A. EA SERIES	84.939
34	AUSTIN 3993CC OHV	87.312	83	B.S.A. 2520 CC	88.900
35	AUSTIN 803CC	57.912	84	B.S.A. 5103 CC 5.1 L	95.000
36	AUSTIN 948CC	62.928	85	B.S.A. BMC (NT)	98.000
37	AUSTIN 997CC	62.420	86	B.S.A. BMC LEYLAND AUSTIN 3.8	100.000
38	AUSTIN A.B.C.MARIN	55.880	87	B.S.A. (SJ 351163)	100.000
39	AUSTIN MARK V USA	70.612	88	B.S.A. (SJ 590701)	100.000
40	AUSTIN MINI COOPER'S	70.610	89	B.S.A. 3770 CC 3.8 L	100.000
41	AUTO BIANCHI 1049 CC	76.000	90	B.S.A. 8.36 L, V8.510	107.950
42	AUTO BIANCHI 903 CC	65.000	91	BUDA 4DT-212	92.075
43	AUTO BIANCHI 965 CC	67.200	92	BUDA 4DT-226	95.250
44	B.M.C. 1489CC-112LI.	73.012	93	BUDA 6DT-468	107.950
45	B.M.C. 2520 CC	88.900	94	BENDIX TF 501	65.530
46	B.M.C. 3770CC 3.8LI.	100.000	95	BENDIX TF 400	51.638
47	B.M.C. 5103CC5.1LI.	95.000	96	BENDIX TF 500	62.738
48	B.M.C. 8.36 L.V8.510	107.950	97	BUHRER-DB OM-636	75.000
49	B.M.C. EA SERIES	84.938	98	BUHRER-DB UM4	75.000



S.No.	Application (Suitable For)	Bore	S.No.	Application (Suitable For)	Bore
99	CADILLARD-V8,60S	72.075	146	DAIHATSU 1587 CC	80.500
100	CATERPILLAR D353/D379/D398/D399	158.750	147	DAIHATSU 2530 CC	88.000
101	CATERPILLAR D6/D334/3304/3306/D330/D333C/3304/3306/ 3306D/D333C/3306D/D334/167	120.650	148	DAIHATSU 2765 CC	92.000
102	CATERPILLAR D343/D346/D348/D349	137.160	149	DAIHATSU 2977 CC	95.000
103	CATERPILLAR 3406/3408/3412	137.160	150	DAIHATSU 3431 CC	102.000
104	CATERPILLAR D3116	105.000	151	DAIHATSU CL10	74.750
105	CATERPILLAR 3204 (7W2293)	114.300	152	DAIHATSU DG.D300	87.600
106	CATERPILLAR 3204 (9N6275)	114.300	153	DAIHATSU DG,DV321	88.000
107	CATERPILLAR D342C/342T/64/D386	146.050	154	DAIHATSU DL	91.600
108	CATERPILLAR D330A/955X/D4C/955H/951B/D4	114.300	155	DAIHATSU DV22,DV202	85.000
109	CBT TRACTOR 1065	97.000	156	DAIHATSU-DH CL10	74.750
110	CBT TRACTOR 1015 / 8440 / 8060	97.000	157	DAIMLER 2404 CC	91.000
111	CBT TRACTOR 1000	91.490	158	DAIMLER BENZ 11600 CC	128.000
112	CBT TRACTOR 8440	101.054	159	DAIMLER BENZ 1988 CC	87.000
113	CBT TRACTOR 82602500	98.476	160	DAIMLER BENZ 2197 CC	87.000
114	CHEVROLET-26,3HP	84.140	161	DAIMLER BENZ 2900 CC	89.000
115	CHEVROLET-261 ENGINE	95.250	162	DAIMLER BENZ 3782 CC	97.000
116	CHEVROLET-29,4HP	88.900	163	DAIMLER BENZ 5100 CC	95.000
117	CHEVROLET-3860CC	90.488	164	DAIMLER BENZ 5673 CC	97.000
118	CHRYSLER-4/4	82.550	165	DAIMLER-4235 CC OHC	92.075
119	CHRYSLER-65-70	80.000	166	DAMAS short	67.750
120	CHRYSLER-KINGSTON	82.550	167	DAMAS short	68.000
121	CITROEN 1796 CC	84.000	168	DAMAS long	68.000
122	CITROEN 1905 CC	83.000	169	DATSUN-BLUEBIRD 1200	73.000
123	CITROEN 1768 CC	80.000	170	DAVID BROWN 2395 CC	100.046
124	CITROEN 2175 CC	90.000	171	DETROIT DIESEL (5193733)	107.950
125	CITROEN 2500 CC	93.000	172	DETROIT DIESEL (5193734)	107.950
126	COMMER 1256 CC Mark-IV	65.088	173	DETROIT DIESEL (DS 550 H)	107.950
127	COMMER 1390CC Mark-VI	76.200	174	DETROIT DIESEL (DS 301 H)	107.950
128	COMMER 1494CC OHV	78.999	175	DETROIT DIESEL	122.935
129	COMMER 1592CCMark-IV	81.539	176	DETROIT DIESEL	98.425
130	COMMER 2.26 LITRE	84.176	177	DETROIT DIESEL (235233920)	130.000
131	COMMER 2266CC OHV	80.962	178	DETROIT DIESEL (8929442)	130.000
132	COMMER 875CC VAN	67.986	179	DETROIT DIESEL	146.000
133	CUMMINS NH,NV,NT,DIE	130.162	180	DEUTZ EY 15	63.000
134	CUMMINS N14 B (3BT/4BT/6BT)	102.020	181	DEUTZ EY 20	67.000
135	CUMMINS (Phosphated) V8-210/V6-155	117.475	182	DEUTZ	109.000
136	CUMMINS (Phosphated) 6CT A8.3 (3919937)	114.000	183	DEUTZ FL-812 (Air Cooled)	95.000
137	CUMMINS (Phosphated) 6CT A8.3 (3907792)	114.000	184	DEUTZ FL-912 (Air Cooled)	100.000
138	CUMMINS LT 10 ES	125.000	185	DEUTZ FL-913 (Air Cooled)	102.000
139	CUMMINS (Phosphated) KT 1150	158.750	186	DEUTZ (Air Cooled)	105.000
140	CUMMINS (Phosphated) NH220	130.175	187	DEUTZ FL-614 (Air Cooled)	110.000
141	CUMMINS (Phosphated) NT855/514	139.700	188	DEUTZ FL-413 (Air Cooled)	120.000
142	DAF 8250 CC	118.000	189	DEUTZ FL-413F (Air Cooled)	125.000
143	DAF DD 575 DIESEL	100.627	190	DEUTZ	135.000
144	DAF DF 615,6.17 LITRE	104.176	191	DEUTZ	142.000
145	DAF DK1160 DIESEL	130.000	192	DODGE-D100,D-200	82.550
			193	DODGE-LET,ME1	87.312
			194	FERGUSON TRACTOR 2260	84.176



S.No.	Application (Suitable For)	Bore	S.No.	Application (Suitable For)	Bore
195	FIAT	95.000	243	FORD (BRITISH) 1760 CC	79.325
196	FIAT	110.000	244	FORD (BRITISH) 1933 CC	90.820
197	FIAT 1048 CC	76.000	245	FORD (BRITISH) 2401E	93.645
198	FIAT 1116 CC	80.000	246	FORD (BRITISH) 2704ET	104.775
199	FIAT 1301 CC	76.050	247	FORD (BRITISH) 2708E	100.000
200	FIAT 1585 CC	84.000	248	FORD (BRITISH) 2711E	107.213
201	FIAT 1592 CC	80.000	249	FORD (BRITISH) 957 CC	73.940
202	FIAT 1697 CC	82.600	250	FORD (BRITISH) AV8,510	107.950
203	FIAT 1895 CC	85.000	251	FORD (BRITISH) XD2	94.000
204	FIAT 1995 CC	84.000	252	FORD DOVER 150	104.775
205	FIAT 2445 CC	93.000	253	FORD TRACTOR 2360 CC	88.925
206	FIAT 2499 CC	93.000	254	FORD TRACTOR 2500 CC	91.491
207	FIAT 2500 CC	93.000	255	FORD TRACTOR 2715 E	107.213
208	FIAT 40 NC	98.880	256	FORD TRACTOR 320 / FD02-101	106.698
209	FIAT 704 CC	80.000	257	FORD TRACTOR BSD 332 / FD02-102	111.778
210	FIAT 843 CC	65.000	258	FORD 1499CC,CLASSIC	80.950
211	FIAT ALLIS (TRACTOR) 13789 CC	137.000	259	FORD 1558 CC	82.550
212	FIAT ALLIS (TRACTOR) 2338 CC / FIAT FT02-101	95.000	260	FORD 1703CC	82.550
213	FIAT FT02-105	100.000	261	FORD 2360 CC DEXTA,TRA	88.925
214	FIAT ALLIS (TRACTOR) 2592 CC / FT02-102	100.000	262	FORD 2500 CC,TRACTOR	91.491
215	FIAT ALLIS 8102 CC (Phosphated)	115.000	263	FORD 2599 CC 711M ENG.	80.985
216	FIAT ALLIS 9819 CC / Tractor 55, 60 R 122 mm	122.000	264	FORD 2737E ENGINE	80.985
217	FIAT Tractor 780 125 mm	125.000	265	FORD 3610,4000,TRACT	111.760
218	FIAT ALLIS 10676 CC	125.000	266	FORD AMERICAN,JEEP	79.375
219	FIAT IVECO 11549 CC	130.000	267	FORD AMERICAN-3655 CC	92.075
220	FIAT IVECO 2445 CC	93.000	268	FORD DT1700 DIESEL	107.950
221	FIAT IVECO 2693 CC	95.000	269	FORD GERMAN-12M	82.000
222	FIAT IVECO (TRACTOR) 3666 CC (21217502)	103.000	270	FORD GERMAN-1698 CC	84.000
223	FIAT IVECO (TRACTOR) 3666 CC (21232202)	103.000	271	FORD GERMAN-EK1000	63.500
224	FIAT IVECO (TRACTOR) 3908 CC (21233902) / FT02-106	104.000	272	FORD GT-122E,ENGINE	84.950
225	FIAT IVECO (TRACTOR) 3908 CC (21232402)	104.000	273	FORD IND.ENGINE	93.647
226	FIAT IVECO 5499 CC	103.000	274	FORD SUPER DEXTA3000	106.680
227	FIAT IVECO 9161 CC	120.000	275	FORD THAMES (SU 3166)	80.950
228	FIAT POLSKI 127A	65.000	276	FORD THAMES (SU 3821F)	80.950
229	FIAT POLSKI 132A	84.000	277	FORD ZEPHIR,ZODIC	79.375
230	FIAT POLSKI V6	93.647	278	FORDSON MAJOR (SJ 196802W)	100.000
231	FIAT TRACTOR 1140 CC	85.000	279	FORDSON MAJOR (SJ 491601WS)	100.000
232	FIAT 1089CC-1100R	68.000	280	GARDNER 6LYT	140.000
233	FIAT 633 CC	60.000	281	GARDNER-HLW DIESEL	107.950
234	FIAT 643N,643N1,409B	120.000	282	GARDNER -L3	139.700
235	FIAT 690N3,BUS306/3	130.000	283	GARDNER-LXB DIESEL	120.650
236	FIAT 767CC-600D	62.000	284	GREAVES-196 CC GO-CART	59.000
237	FIAT TRACTOR 614.01 / 615 D	85.900	285	HILLMAN-1265 CC HUSKE	65.088
238	FIAT TRACTOR 8035.06,8045.06,8065.06	100.000	286	HILLMAN-1390 CC	76.200
239	FIAT TRACTOR 220/8200.1	120.000	287	HILLMAN-1494 CC	78.999
240	FORD (BRITISH) 105E	80.950	288	HILLMAN-1496 CC HUNTER	81.539
241	FORD (BRITISH) 106E	80.950	289	HILLMAN-875 CC	67.986
242	FORD (BRITISH) 1593 CC	87.670	290	HINO 3B 3431 CC	102.000
			291	HINO B 2977 CC	95.000



S.No.	Application (Suitable For)	Bore	S.No.	Application (Suitable For)	Bore
292	HINO DH100	105.000	341	INTERNATIONAL (NAVISTAR) C-221	90.500
293	HINO DK10	120.000	342	INTERNATIONAL (NAVISTAR) C-248	98.425
294	HINO DK20	120.000	343	INTERNATIONAL (NAVISTAR) C-291	95.250
295	HINO DM100	90.000	344	INTERNATIONAL (NAVISTAR) D-407	109.753
296	HINO DS50,80 (Phosphated)	110.000	345	INTERNATIONAL (NAVISTAR) B 275	85.725
297	HINO DS70,90	105.000	346	INTERNATIONAL (NAVISTAR) B444,434	88.900
298	HINO EB100,200	115.000	347	INTERNATIONAL (NAVISTAR)-B 450	101.600
299	HINO EB400 / EB300	120.000	348	INTERNATIONAL (NAVISTAR)-B 614	104.775
300	HINO EC100	97.000	349	INTERNATIONAL (NAVISTAR)-RD372	111.125
301	HINO ED100	128.000	350	INTERNATIONAL (NAVISTAR)-TD24UD24	146.177
302	HINO EF100	130.000	351	INTERNATIONAL (NAVISTAR)-TD9,TD9A	111.760
303	HINO EF300	132.000	352	INTERNATIONAL (NAVISTAR)-UD6A	98.425
304	HINO EF500	135.000	353	INTERNATIONAL (NAVISTAR)-WD9	114.300
305	HINO EF550	135.000	354	INTERNATIONAL (NAVISTAR) D -188	93.675
306	HINO EF700,750	137.000	355	INTERNATIONAL (NAVISTAR) (IHC)	100.000
307	HINO EG100	135.000	356	ISUZU 4 BBI	102.000
308	HINO EH300 (Phosphated)	108.000	357	ISUZU 4 JA1 (Chrome Hardened)	93.000
309	HINO EH500 (Phosphated)	110.000	358	ISUZU 4 JB1 (Chrome Hardened)	93.000
310	HINO EH100	105.000	361	ISUZU 4FBI	82.900
311	HINO EK100	137.000	362	ISUZU 6QAI	125.000
312	HINO EL100	116.000	363	ISUZU 6RBI	135.000
313	HINO EM 100 (16125-CE)	124.000	364	ISUZU 6SAI	115.000
314	HINO EM 100 (SJ 351311)	124.000	365	ISUZU D920	125.000
315	HINO EM 100 (SJ 351249) (Phosphated)	110.000	366	ISUZU DA640	102.000
316	HINO EP100	120.000	367	ISUZU DA120,DA22	100.000
317	HINO HO6BT	105.800	359	ISUZU C 223	88.000
318	HINO M10U	127.000	360	ISUZU C 290	86.000
319	HINO V22C	139.000	368	ISUZU DA120,DA220	100.000
320	HINO W04D 4009 CC	104.000	369	ISUZU DH100	120.000
321	HINO W04D,W06D	104.000	370	ISUZU E110	125.000
322	HONDA 250 CC	64.010	371	ISUZU E120	135.000
323	HONDA 305 CC	64.000	372	ISUZU PAI,PBI	115.000
324	HUDSON-3475 CC	76.200	373	ISUZU PC1	119.000
325	HUDSON-4168 CC	76.200	374	ISUZU V170	145.000
326	HYUNDAI 4D31-T	100.000	375	ISUZU C190/C240	86.000
327	HYUNDAI 4D55	91.100	376	ISUZU 4HF1	112.000
328	HYUNDAI 6D16	118.000	377	ISUZU 6BD1 (Chrome Hardened)	102.000
329	HYUNDAI (3.5 Ton)	99.000	378	ISUZU 6BG1 (Chrome Hardened)	105.000
330	HYUNDAI (2.5 Ton)	103.000	379	ISUZU C190/C240	86.000
331	HYUNDAI	91.100	380	ISUZU 4FB1/4FC1	84.000
332	HYUNDAI (With Collar)	91.100	381	JAGUAR-3781CC MARK-IX	86.990
333	HYUNDAI (Over Size)	91.100	382	JAGUAR-4235 CC	92.075
334	HYUNDAI (3500)	100.000	383	JEEP 2710 CC	92.000
335	HYUNDAI (3500)	104.000	384	JOHN DEERE 1520, JD410, 2030, 6600	102.000
336	HYUNDAI	104.000	385	JOHN DEERE	
337	INTERNATIONAL (NAVISTAR) DT 466E	109.220		3179D, 2040, 2140, 2150, 3179T, 4239D,	
338	INTERNATIONAL (NAVISTAR) DT 466	109.220		2350, 2355, 4239T, 310C, 6359D/T	106.500
339	INTERNATIONAL (NAVISTAR) DT 360	101.600	386	JOHN DEERE 4276D,4276T,6414D,6414T	106.532
340	INTERNATIONAL (NAVISTAR) C-152	85.725	387	JOHN DEERE 3152D / 4202D / 6303D	98.470



S.No.	Application (Suitable For)	Bore	S.No.	Application (Suitable For)	Bore
388	KARRIER-2259CC,2.26LIT.	84.176	437	KUBOTA GA - 90	90.000
389	KARRIER-2266CC,BANTAN	80.962	438	KUBOTA ET - 110	92.000
390	KEVIN-J-SERIES 1	07.950	439	KUBOTA RD - 105	92.000
391	KEVIN-K-SERIES 1	52.400	440	KUBOTA ET - 115	94.000
392	KIA BESTA 2.7	93.013	441	KUBOTA KND - 90	95.000
393	KIA BESTA R2	86.000	442	KUBOTA ER - 1500	110.000
394	KIA S2	88.900	443	KUBOTA ER - 100	110.000
395	KIA BONGO 2.4	91.400	444	KUBOTA ER - 2200	116.000
396	KIA PREGIO 2.7	94.500	445	KUBOTA KND - 250 / ER-25	118.000
397	KIA PREGIO 3	98.013	446	KUBOTA KND - 3200	150.000
398	KIA TRADE 3.5	100.000	447	KUBOTA DA1	94.250
399	KIA HI TOPIC	91.400	448	KUBOTA DA14	74.000
400	KIA CERES	88.100	449	KUBOTA DA15	62.000
401	KIA BESTA 2.7	93.013	450	KUBOTA DA16	63.000
402	KIA PREGIO 3	98.013	451	KUBOTA DA17	65.000
403	KIA 2700	94.550	452	KUBOTA DA18	67.000
404	KIA 2200	86.000	453	KUBOTA DA19	73.000
405	KIA 2400	92.000	454	KUBOTA DA20	54.500
406	KIA 3000	98.000	455	KUBOTA DA21	78.000
407	KIA 3600	100.000	456	KUBOTA DA22	61.000
408	KOMATSU 828 AC.3	76.000	457	KUBOTA DA23	50.000
409	KOMATSU 6D 95	95.000	458	LANCER	76.900
410	KOMATSU D30E-16B/D50A-15C	97.000	459	LANCIA 132 DB,2A	84.000
411	KOMATSU S6D105	105.000	460	LANCIA 132 .A.13000	80.000
412	KOMATSU SD110	110.000	461	LANCIA 828 AC.3	76.000
413	KOMATSU D125	125.000	462	LANCIA 828 DB,013	84.000
414	KOMATSU D155	155.000	463	LANCIA 831 D.000	82.600
415	KOMATSU 6D 170	170.000	464	LAND ROVER 3.9 LEFI	94.000
416	KUBOTA KND - 3	68.000	465	LAND ROVER 3528 CC	88.862
417	KUBOTA RD - 45	72.000	466	LAND ROVER 2286CC1&11	90.475
418	KUBOTA GA 70	75.000	467	LAND ROVER 1997CC,2L	77.800
419	KUBOTA ER 40	75.000	468	LAND ROVER 1595CC1.5L	69.500
420	KUBOTA GA 120	75.000	469	LEYLAND 0400PP,MK 1/2.	107.226
421	KUBOTA KND - 40	75.000	470	LEYLAND 1695 CC	84.442
422	KUBOTA RD -55	76.000	471	LEYLAND 2498 CC	94.000
423	KUBOTA 70 ER - 22	78.000	472	LEYLAND 5800 CC	98.476
424	KUBOTA KND - 5B	80.000	473	LAYLAND 680PP,MK1/2/3	127.015
425	KUBOTA RD - 65	80.000	474	LEYLAND 8200 CC	118.001
426	KUBOTA ER - 50	82.000	475	LEYLAND EA SERIES25U	84.938
427	KUBOTA RD - 75	82.000	476	LEYLAND L 12	135.538
428	KUBOTA GA - 80	82.000	477	LEYLAND V8.510	107.950
429	KUBOTA ET - 80	84.000	478	LEYLAND 154 TRACTOR	73.012
430	KUBOTA KND - 5B	85.000	479	LEYLAND 1670CC PETROL	76.187
431	KUBOTA ET - 95	86.000	480	LEYLAND 350 FG	82.550
432	KUBOTA RD - 85	86.000	481	LEYLAND 350 MARK-II	100.627
433	KUBOTA RK - 105	88.000	482	LEYLAND 370POWER PLUS	103.350
434	KUBOTA KND - 70	90.000	483	LEYLAND 375 SUPER	104.183
435	KUBOTA ER - 65	90.000	484	LEYLAND 400,401	107.211
436	KUBOTA GA - 100	90.000	485	LEYLAND 450,7.931L.	111.125



S.No.	Application (Suitable For)	Bore	S.No.	Application (Suitable For)	Bore
486	LEYLAND 600,9.8L	121.935	535	MAZDA 3000	95.000
487	LEYLAND 680,11.1L	127.015	536	MAZDA T-3500	100.000
488	LEYLAND 698	98.000	537	MERCEDES OM-637	75.000
489	LEYLAND 8.36L.	107.950	538	MERCEDES 1692 CC	87.000
490	LEYLAND 0E138	84.176	539	MERCEDES OM312	90.000
491	LEYLAND 0E160	87.732	540	MERCEDES OM315	112.000
492	LOTUS 1558 CC	82.500	541	MERCEDES OM321	95.000
493	M.G.-1098 CC	64.567	542	MERCEDES OM346	128.000
494	M.G.-1250 CC TD	66.500	543	MERCEDES OM352 (OD 103.099)	97.000
495	M.G.-1275 CC MARK-II	70.612	544	MERCEDES OM352 (OD 101.000)	97.000
496	M.G.-1798 CC MGBGT	80.251	545	MERCEDES OM352 (OD 101.500)	97.000
497	M.G.-948 CC MIDGET	62.928	546	MERCEDES OM352 (OD 101.150)	97.000
498	M.G.-1489 CC-MGA	73.025	547	MERCEDES OM352 (OD 101.650)	97.000
499	MACK TRUCK END-707	127.000	548	MERCEDES OM355A	128.000
500	MACK TURCK ENDT-373C	123.825	549	MERCEDES OM421/422 (Phosphated)	128.000
501	MACK TRUCK END-673	123.825	550	MERCEDES OM424 / 424A / 424LA / 441A / 441Euro1 / 441LA / 441Euro1 & 2 / 442A / 442LA / 442LA / 443A Turbocharged / 444LA (Phosphated)	128.000
502	MAN D 2530 / D 2876	90.000	551	MERCEDES (Phosphated)	125.000
503	MAN 0226 M	102.000	552	MERCEDES OM 401 / OM 402 / OM 403 (403 011 3210 / SJ 351231)	125.000
504	MAN D 0824	108.000	553	MERCEDES OM 401 / OM 402 / OM 403 (003 WN 14)	125.000
505	MAN D 1146	111.000	554	MERCEDES OM 409 / A / HA / H / OM 407	125.000
506	MAN D 1246	112.000	555	MERCEDES OM 443 / 444	130.000
507	MAN D2156	121.000	556	MERCEDES OM602	88.000
508	MAN D2356	123.000	557	MERCEDES OM615/913/915/615/910	88.000
509	MAN (227 WN 32)	125.000	558	MERCEDES OM616/617	92.000
510	MAN (227 WN 34)	128.000	559	MERCEDES OM621	85.000
511	MAN DO 846 HM2	108.000	560	MERCEDES M110	85.000
512	MASSEY-MF-135 DIESEL	91.491	561	MERCEDES M115	87.000
513	MASSEY FERGUSON A4.2	98.476	562	MERCEDES M102	89.000
514	MASSEY FERGUSON,MF13	91.491	563	MERCEDES 314	97.000
515	MASSEY FERGUSON MF-1080	114.313	564	MERCEDES (Air Cooled)	90.000
516	MASSEY FERGUSON MF 175	98.476	565	MERCEDES (Air Cooled)	100.000
517	MASSEY FERGUSON 6.60	100.000	566	MERCURY-3655 CC	92.075
518	MASSEY FERGUSONA4.2	101.054	567	MAZDA 4D30 (15433-BA)	99.000
519	MASSEY FERGUSON A4.3	114.313	568	MAZDA 4D30	100.000
520	MAZDA R2	86.000	569	MAZDA 4D31	100.000
521	MAZDA S2	88.900	570	MAZDA 4D32	104.000
522	MAZDA XA	88.900	571	MAZDA 4D33	108.000
523	MAZDA HA E-3500 (Phosphated)	100.000	572	MAZDA 4D34	104.000
524	MAZDA HA NEW-E 3000	95.000	573	MAZDA 4D55	91.000
525	MAZDA HA0E 3000	92.000	574	MAZDA 4D56	90.500
526	MAZDA NA	95.000	575	MAZDA 4D56	91.100
527	MAZDA PB	68.000	576	MAZDA 4D65/65T	80.600
528	MAZDA VA	82.000	577	MAZDA JH 4	79.400
529	MAZDA XB-E 2700	92.000	578	MAZDA 6D10	105.000
530	MAZDA XB/ZB	92.000			
531	MAZDA SL	100.000			
532	MAZDA WL	93.000			
533	MAZDA 2500	88.900			
534	MAZDA 2700	92.000			



S.No.	Application (Suitable For)	Bore	S.No.	Application (Suitable For)	Bore
579	MITSUBISHI-6D14 (16131-11) OD/112	110.000	628	MORRIS MINI MARKII	64.567
580	MITSUBISHI 6D14 OD/122	110.000	629	MORRIS MINI VAN	62.928
581	MITSUBISHI 6D15	113.017	630	MORRIS MINOR SERIES	57.000
582	MITSUBISHI 6D16	118.000	631	MWM TD 229 102 mm	102.000
583	MITSUBISHI-6D20	125.000	632	MWM D 229 102 mm asp	102.000
584	MITSUBISHI 6D22	130.000	633	NISSAN BD30	96.000
585	MITSUBISHI-6D22T	130.000	634	NISSAN CD17	80.000
586	MITSUBISHI-6DE	110.000	635	NISSAN E15	76.000
587	MITSUBISHI-6DS1	95.000	636	NISSAN FD35	102.500
588	MITSUBISHI-6DS3	95.000	637	NISSAN FD6 / PD6 (Chrome Hardened)	100.000
589	MITSUBISHI-6DS5	98.000	638	NISSAN J15	78.000
590	MITSUBISHI-6DS7 (15203-AC)	98.000	639	NISSAN LD20	85.000
591	MITSUBISHI-6DS7 (15203-BA)	98.000	640	NISSAN NSCD17	79.700
592	MITSUBISHI-8DC	135.000	641	NISSAN ND6	110.000
593	MITSUBISHI-8DC9	135.000	642	NISSAN PD6 (N49)	125.000
594	MITSUBISHI 4M40	95.000	643	NISSAN PD6 (SJ 351149)	125.000
595	MITSUBISHI 360	115.000	644	NISSAN RD 6	133.000
596	MITSUBISHI 355	128.000	645	NISSAN RD 8	135.000
597	MITSUBISHI 355 OVER SIZE	128.000	646	NISSAN RD 28	85.000
598	MITSUBISHI 4DR5/6DR5	92.000	647	NISSAN SD 20	83.000
599	MITSUBISHI 4G30/4G36	73.025	648	NISSAN SD 22	83.000
600	MITSUBISHI 4G41	76.200	649	NISSAN SD 23	89.000
601	MITSUBISHI 4G52	83.740	650	NISSAN SD 33	83.000
602	MITSUBISHI 4G54B	88.500	651	NISSAN TD 23	89.000
603	MITSUBISHI 4G62	79.000	652	NISSAN TD 25	92.900
604	MITSUBISHI KE44 / KE46	73.025	653	NISSAN TD 27/TD 42	96.000
605	MITSUBISHI S6G	101.000	654	NISSAN A12S	73.000
606	MORGAN 2737E	80.950	655	NISSAN A14	75.220
607	MORGAN 3528 CC	88.862	656	NISSAN A10/A12/A13	73.025
608	MORGAN 1498 CC	80.950	657	NISSAN FE6T	108.000
609	MORGAN 997 CC	80.950	658	NISSAN H20	87.300
610	MORRIS 803 CC	57.912	659	NISSAN L18	85.000
611	MORRIS B SERIES 1798CC	80.251	660	NISSAN L20B	85.000
612	MORRIS B SERIES 22VA	82.550	661	NISSAN Z20	85.000
613	MORRIS E SERIES 2227CC	76.200	662	NISSAN Z24	88.900
614	MORRIS O SERIES1695 CC	84.442	663	NISSAN QD32	99.200
615	MORRIS 100S	80.250	664	NUFIELD TRACTOR 15T	73.012
616	MORRIS 1200 CC	65.468	665	NUFIELD TRACTOR 16T	76.187
617	MORRIS 1275 CC	70.612	666	PERKINS-4.248 DIESEL	101.054
618	MORRIS 1476CC,SV OXF	73.500	667	PERKINS 2500 CC	91.491
619	MORRIS 1489 CC	73.025	668	PERKINS 2523 CC	88.925
620	MORRIS 1489 CC,J4M10	73.012	669	PERKINS 4065 CC	101.054
621	MORRIS 1622 CC,J2,J4	76.187	670	PERKINS 5800 CC	98.476
622	MORRIS 2199 CC,LC,LC5	79.352	671	PERKINS A4.212	98.476
623	MORRIS 2520 CC	84.938	672	PERKINS P3	88.925
624	MORRIS 2520 CC	88.900	673	PERKINS MF02-116A	100.000
625	MORRIS 3993 CC	87.312	674	PERKINS MF02-106A / T4.40	100.000
626	MORRIS MINI COOPER	62.421	675	PERKINS V8.510	107.950
627	MORRIS MINI COOPER	70.612	676	PERKINS 1.76 L.	79.375



S.No.	Application (Suitable For)	Bore	S.No.	Application (Suitable For)	Bore
677	PERKINS 5560 CC	101.600	726	RELIANT-1703 CC	82.550
678	PERKINS 8 8.36 LIT.	107.950	727	RELIANT-2944 CC	93.647
679	PERKINS P4, P6.	88.925	728	RELIANT-747 CC	55.880
680	PERKINS (31358323)	91.491	729	RENAULT MIDLUM	102.000
681	PERKINS MF02-101 (31358345)	91.491	730	RENAULT	55.800
682	PERKINS (31358394)	98.476	731	RENAULT 2445 CC	93.000
683	PERKINS MF02-113 (3135X031)	98.476	732	RENAULT F8M	78.000
684	PERKINS MF02-104 (3135X032)	98.470	733	RILEY-1275 CC	70.612
685	PERKINS (SU 628201)	91.491	734	RILEY-1489 CC	73.025
686	PERKINS MF02-110 (SU 530201)	91.491	735	RILEY-848 CC	62.928
687	PERKINS (SJ 546900)	91.491	736	RILEY-998 CC	64.567
688	PERKINS W/Collar	91.491	737	RILEY-FALCON-	69.000
689	PERKINS (SU 553201)	79.370	738	ROVER 0 SERIES	84.442
690	PERKINS (SU 351027)	88.920	739	ROVER 2286 CC	90.475
691	PERKINS (SU 351104)	92.000	740	ROVER 3528 CC	88.862
692	PERKINS MF02-111 (SU 8900)	88.920	741	ROVER P6	85.725
693	PERKINS MF02-104 (SJ 351342)	98.470	742	ROVER XUD9	83.000
694	PERKINS (SU 538101)	98.476	743	RUMANIYA-UTB 650	108.000
695	PERKINS W/Collar	98.476	744	RUMANIYA-U 500/650 D	108.000
696	PERKINS (SU 351026)	101.054	745	RUMANIYA-UTB 800	110.000
697	PERKINS MF02-115 W/Collar	101.054	746	RUSSIAN BELARUS MTZ45	105.000
698	PERKINS MF02-105 (SJ 351166)	101.054	747	RUSSIAN BELARUS MTZ50	110.000
699	PERKINS MF02-106 (SJ 351347)	101.054	748	RUSSIAN BELARUS MTZ80	110.000
700	PERKINS (SU 351193)	114.310	749	RUSSIAN 6HP / D24	85.000
701	PERKINS (SU 351192)	114.310	750	RUSSIAN 100	100.000
702	PERKINS (SU 351178)	98.476	751	RUSSIAN T 62	120.000
703	PERKINS MF02-112 (SU 569200)	98.476	752	RUSSIAN DT-14,DT-28	125.000
704	PERKINS MF02-103 (SJ 351150)	98.476	753	SCANIA D8 / DS8 (243817 / 228110)	115.000
705	PERKINS (SJ 351207)	107.950	754	SCANIA DS8 (AE 061 WN 08)	115.000
706	PERKINS W/Collar	91.491	755	SCANIA D11 / DS11 (363305 / 230150)	126.800
707	PEUGEOT	70.000	756	SCANIA D11/DS11 (235828)	127.000
708	PEUGEOT 205	75.000	757	SCANIA DS14 (230151 / 170690)	127.000
709	PEUGEOT 305	78.000	758	SCANIA 113	127.000
710	PEUGEOT XC7/XC7P/404/504/404L	84.000	759	SCANIA D111	127.000
711	PEUGEOT XD88/XN1/2 / 505 XN1	88.000	760	SCANIA 124	127.000
712	PEUGEOT-1948 CC, 404	88.000	761	SIMCA-1221 CC, 1.2 LIT.	72.000
713	PEUGEOT-2112 CC, 504	90.000	762	SIMCA-1290 CC	74.000
714	PEUGEOT- CRD 93	93.000	763	SINGER-1494 CC	78.999
715	PEUGEOT XD2	94.000	764	SINGER-1592 CC	81.539
716	PEUGEOT-XD2S	94.000	765	SINGER-875 CC	67.986
717	PEUGEOT-XUD7	80.000	766	SINGER-875 CC	72.532
718	PEUGEOT-XUD9	83.000	767	STANDARD-147 CC	69.289
719	PEUGEOT XD85/XDP85	85.000	768	STANDARD-1998 CC	74.689
720	R.V.I. D 2356	123.000	769	STANDARD-2260 CC	84.176
721	R.V.I. D 2858M	128.000	770	STANDARD-948 CC,ATLAS	63.000
722	R.V.I. D 0846 HM2	108.000	771	STEYR-1291	126.000
723	R.V.I. D 2156	121.000	772	STEYR-506	104.930
724	RVI 209WN12	120.000	773	STUDIBACKER CHEMAION	85.725
725	R.V.I. MS/MDS 635 / 209WT18	135.000	774	SUNBEAM-1390 CC	76.020



S.No.	Application (Suitable For)	Bore	S.No.	Application (Suitable For)	Bore
775	SUNBEAM-1494 CC ,APLIN	78.999	824	TOYOTA BU30	95.000
776	SUNBEAM-1592 CC,H120	81.539	825	TOYOTA 1W	104.000
777	SUNBEAM-2267 CC	80.962	826	TOYOTA 3Y	86.000
778	SUNBEAM-875 CC	67.986	827	TOYOTA 11B	95.000
779	SUNBEAM-996 CC	72.532	828	TOYOTA 21R	84.000
780	TALBOT V25	93.000	829	TOYOTA 4Y	90.100
781	TALBOT XUD9	83.000	830	TOYOTA 5L	90.100
782	TATRA (Air Cooled)	120.000	831	TRIUMPH 1147 CC	69.289
783	TIGER T-10	104.000	832	TRIUMPH 129 CC	74.689
784	TOYOTA (CL916)	75.000	833	TRIUMPH CARS 23 C	84.176
785	TOYOTA 5R	88.000	834	TRIUMPH CARS 2997 CC	84.987
786	TOYOTA 12R	80.500	835	TRIUMPH CARS 1296 CC	74.689
787	TOTOTA 2B W/Collar	98.000	836	TRIUMPH HERALD S	63.000
788	TOYOTA-2B	98.000	837	VAUXHALL-1057 CC	74.295
789	TOYOTA 2D W/Collar	105.000	838	VAUXHALL-4ECI	76.000
790	TOYOTA-2D	105.000	839	VAUXHALL-1057 CC	74.295
791	TOYOTA 2H	91.000	840	VAUXHALL-1159 CC, DE	77.749
792	TOYOTA 2J	88.000	841	VAUXHALL-CRESTA	79.375
793	TOYOTA 2L	92.000	842	VAUXHALL-SERIES 101	81.635
794	TOYOTA 3B (SU 351228)	102.000	843	VILLIERS-MARK 2L, 3L.	59.000
795	TOYOTA 3B (N66)	102.000	844	VOLKSWAGON	85.500
796	TOYOTA B (SU 351232) OD/102.070	95.000	845	VOLKSWAGON 1471 CC / D24	76.500
797	TOYOTA B (11461.56030) OD/99.000	95.000	846	VOLKSWAGON 1200 CC	77.000
798	TOYOTA L (SU 351227)	90.000	847	VOLKSWAGON 1800 CC	81.000
799	TOYOTA L (15455-AA)	90.000	848	VOLKSWAGON 1600 CC	85.500
800	TOYOTA L	89.600	849	VOLKSWAGON 4.165	92.000
801	TOYOTA 1C	83.000	850	VOLKSWAGON 1900 CC	94.000
802	TOYOTA B	94.600	851	VOLVO THD 100D	120.640
803	TOYOTA CORONA-3R	88.000	852	VOLVO 1580 CC, AMAZON	79.375
804	TOYOTA 1HZ	94.000	853	VOLVO 1780 CC	84.138
805	TOYOTA 3L	96.000	854	VOLVO 9.6 L.D96AL	120.650
806	TOYOTA BU60	95.000	855	VOLVO TD42	105.575
807	TOYOTA 4A	81.000	856	VOLVO TD60	98.400
808	TOYOTA 1Y	86.000	857	VOLVO TD61A	98.400
809	TOYOTA 1KZ	96.000	858	VOLVO TD70 (037 WN 49)	104.770
810	TOYOTA 3B	102.000	859	VOLVO TD70 (037 WN 11)	104.770
811	TOYOTA 2C	86.000	860	VOLVO TD100A	120.640
812	TOYOTA 3F	93.650	861	VOLVO TD100B	120.640
813	TOYOTA H	88.000	862	VOLVO TD120	130.180
814	TOYOTA 3K	75.000	863	VOLVO TD121	130.180
815	TOYOTA 4K	75.000	864	VOLVO TD122	130.180
816	TOYOTA 13B	102.000	865	VOLVO	85.350
817	TOYOTA 14B	102.000	866	VOLVO D12A	131.000
818	TOYOTA 3B+14B	102.000	867	VOLVO FH12	131.000
819	TOYOTA 22R	92.000	868	WILLYS-HURRICAN	79.375
820	TOYOTA 2E	73.000	869	WOLSELEY -BSERIES 1798	80.251
821	TOYOTA 2T	85.000	870	WOLSELEY -BSERIES2227	76.200
822	TOYOTA 3T	85.000	871	WOLSELEY-1250 CC	66.500
823	TOYOTA I	90.000	872	WOLSELEY-1275 CC	70.612



S.No.	Application (Suitable For)	Bore	S.No.	Application (Suitable For)	Bore
873	WOLSELEY-1476 CC	73.500	922	YANMAR F - 9	95.000
874	WOLSELEY-1489 CC	73.025	923	YANMAR TA - 140	95.000
875	WOLSELEY-1622 CC	76.187	924	YANMAR TF - 1351140	96.000
876	WOLSELEY-1798 CC	80.251	925	YANMAR D - 10	100.000
877	WOLSELEY-848 CC	62.928	926	YANMAR TF - 150	102.000
878	WOLSELEY-998 CC	64.567	927	YANMAR SM3 / SM 4	105.000
879	YANMAR N22Y	140.000	928	YANMAR N 15 Y	110.000
880	YANMAR TS 50	70.000	929	YANMAR NP 16	110.000
881	YANMAR TS 60	75.000	930	YANMAR NT - 110	110.000
882	YANMAR TS 70	80.000	931	YANMAR TS -230	112.000
883	YANMAR TS 80	80.000	932	YANMAR 3 ES	115.000
884	YANMAR TS 105	85.000	933	YANMAR LD LDF	140.000
885	YANMAR TS 130	92.000	934	YANMAR N 22 Y	140.000
886	YANMAR TS 155	95.000	935	YANMAR G - 2	145.000
887	YANMAR TS 180	102.000	936	YANMAR N 28 Y	145.000
888	YANMAR TS 190	110.000	937	YANMAR Gen-1	64.000
889	YANMAR 2T/3T	95.425	938	YANMAR Gen-2	66.000
890	YANMAR NT - 65	65.000	939	Z-GA 100	90.000
891	YANMAR D - 4	70.000	940	Z-GA 70	75.000
892	YANMAR TF - 50	74.000	941	Z-GA 80	82.000
893	YANMAR NT-75	74.000	942	Z-M-85	80.000
894	YANMAR D-5	75.000	943	Z-TF 85	85.000
895	YANMAR TF - 55 / 60	75.000	944	ZASTAVA 128 A	80.000
896	YANMAR NT - 75	75.000	945	ZETOR 2011	95.000
897	YANMAR TF - 65/70	78.000	946	ZETOR 5911	100.000
898	YANMAR TF - 75	80.000	947	ZETOR HMT 4511 / G 453	102.000
899	YANMAR D - 6	80.000	948	ZETOR SUPER-50	105.000
900	YANMAR NT - 80	80.000	949	ZETOR 110	110.000
901	YANMAR TA - 70	80.000			
902	YANMAR TA - 80	84.000			
903	YANMAR D-7 (OD 90.000mm)	85.000			
904	YANMAR D-7 (OD 91.000mm)	85.000			
905	YANMAR TF - 85	85.000			
906	YANMAR D - 7	85.000			
907	YANMAR NT - 85	85.000			
908	YANMAR 3 LK	85.000			
909	YANMAR TA - 100	85.000			
910	YANMAR TF - 105	88.000			
911	YANMAR NS - 10	88.200			
912	YANMAR D-8	89.000			
913	YANMAR D - 8	90.000			
914	YANMAR TA 120/ SA 120	90.000			
915	YANMAR TF - 115	92.000			
916	YANMAR SS-4 (CD 103.000mm)	94.000			
917	YANMAR SS-4 (CD 102.000mm)	94.000			
918	YANMAR 2T (CD 121.800mm)	95.000			
919	YANMAR 2T (CD 122.000mm)	95.000			
920	YANMAR SS - 4	95.000			
921	YANMAR NT - 95	95.000			



Veraval Main Road,
N H 8-B, Veraval (Shapar),
Rajkot - 360 024
Gujarat-India

Phone : +91-2827-252233
Fax : +91-2827-252275
E-mail : info@srimantaliners.com
Web : www.srimantaliners.com